



# SECUREWATCH

SecureWatch is the premier cloud-based subscription service for secure and timely access to Earth Intelligence. With a broad range of imagery and geospatial information products, SecureWatch provides unrivaled coverage, quality and flexibility. Subscribers can quickly access over 3 million square kilometers of daily image collections, plus more than 6 billion square kilometers of archived imagery at up to 30 cm resolution.

Maxar satellite imagery is available to view or download in SecureWatch within 48 hours of collection, so you can monitor and communicate relevant activity in any location around the globe.

SecureWatch offers the best value for a wide range of geospatial projects such as supporting mapping, detecting change over time, monitoring assets, responding to disasters, humanitarian efforts, and more.

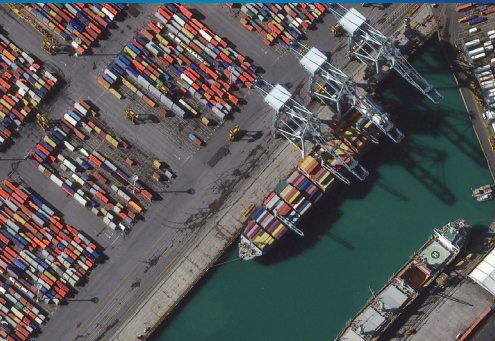
## Key Features

- » Highest commercially available resolution; up to 30 cm
- » Global coverage
- » Imagery available within 48 hours of acquisition
- » Key metadata included
- » Time-lapse image archive for change detection
- » True color, orthorectified image strips and mosaics available for offline use
- » Refresh alerts for your area of interest
- » Access via browser or API
- » Predictable global collections

## Benefits

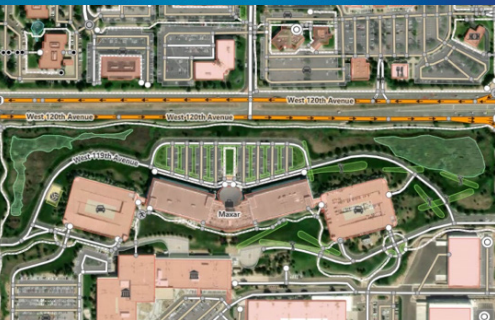
- » Make timely, informed decisions
- » Leverage the 20-year, 100+ petabyte image archive
- » Easy access to short-wave infrared imagery and stereo pairs
- » Increase efficiency with frequent updates
- » Reduce tasking costs and traditional order processing time with off-the-shelf availability
- » On-demand access via the GIS tool of your choice to extract the information you need
- » No geographical or concurrent user restrictions
- » Privacy

### INTELLIGENCE-GRADE RESOLUTION



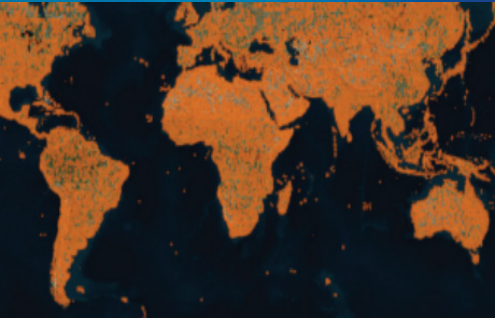
WorldView-3 | 30 cm | Auckland, New Zealand

### PRECISION MAPPING



© Image by DSM

### RECENT IMAGERY COLLECTIONS

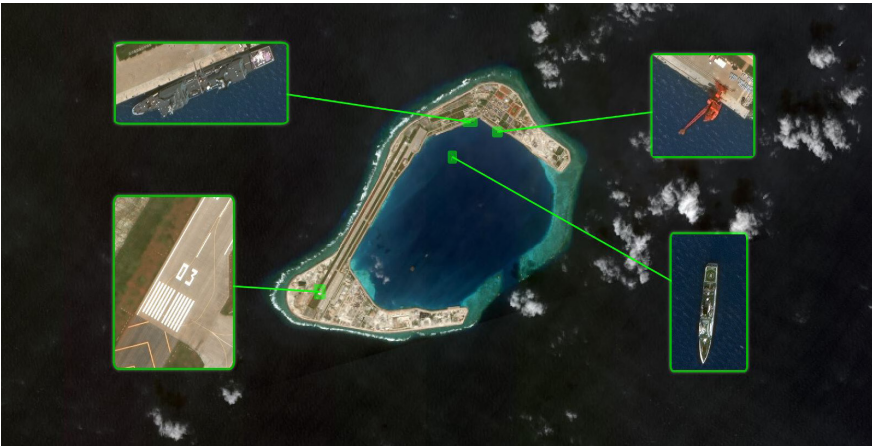


Six months of new imagery collections shown as orange areas

Specifications

Electro-optical	WorldView-4, 3, 2, 1, GeoEye-1, Quickbird, and enriched third-party sensor data
Synthetic Aperture RADAR (SAR)	MDA RADARSAT-2 Wide Ultra-Fine (3 m resolution) over select geographies
Resolution	30-100 cm GSD pan sharpened at nadir, 2 m over Israel
Image bands	» Full resolution viewing and rapid downloading imagery is panchromatic (WorldView-1) and 3-band pan sharpened natural color (all other sensors)  » 8 band VNIR and SWIR multispectral products
Stereo Imagery	» Full access to Maxar stereo archive. Image pairs are delivered as System-Ready (level 1B) with full metadata
Accuracy, on global basis	<10 m CE90, for most hosted imagery
Digital elevation model	SRTM 2 (30 m) where available
Availability	Maxar imagery is available within 48 hours of collection

Development of Subi Reef, South China Sea



WorldView-3 | 08/20/2019 | Pan Sharpened Natural Color

DELIVERABLES

Access to SecureWatch via:

- » Web browser interface
- » OGC streaming services
- » Esri ArcGIS and ArcGIS Pro
- » Google Earth plugin

SUBSCRIPTIONS

Subscriptions includes:

- » Access to the complete Maxar optical image library
- » Available at multiple pricing levels based on data consumption or streaming seats

SECURITY

- » Active prevention of SQL-Injection, cross-site scripting, DoS and DDoS attacks
- » Web Application Firewall that performs deep inspection of all web traffic
- » HTTPS encryption of all communication between client and server
- » Multi-tiered firewall approach to ensure customer data protection
- » SFTP, Aspera, and AWS S3 secure downloads are supported

01/08/2014



WorldView-2  
Pan Sharpened Natural Color

07/21/2015



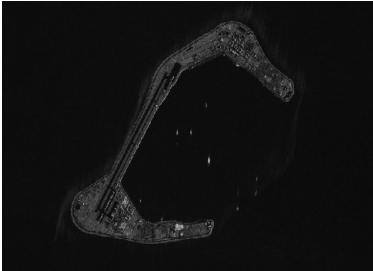
WorldView-3  
Pan Sharpened Natural Color

08/20/2019



WorldView-3  
Pan Sharpened Color Infrared

10/31/2019



RADARSAT-2  
SAR