



Visual Information Solutions

EXELIS VISUAL INFORMATION SOLUTIONS

Empowering you to easily extract meaningful information from geospatial data in the pursuit of discovery.

UNDERSTAND THE WORLD AROUND YOU


Today, remotely sensed data is used to make critical decisions, to make discoveries, and to better understand the world around us. Various types of data, from airborne and satellite imagery to non-optical data such as LiDAR and SAR, is growing exponentially in availability and usage. Whether used autonomously or fused together for a more complete picture of a geographic area, remote sensing data is moving professionals across industries and disciplines into a new era of more informed decision making.

Exelis Visual Information Solutions (Exelis VIS) is a leading provider of software tools designed to help you get the information you need from your remotely sensed data. Whether you are a GIS professional enhancing your mapping application with information from imagery, a defense analyst identifying safe terrain, or a scientist committed to conserving natural resources, Exelis VIS products deliver the technology you need to turn your data into actionable information.

The logo for Exelis, featuring the word "EXELIS" in a bold, orange, sans-serif font. The "X" is stylized with a diagonal line through it.

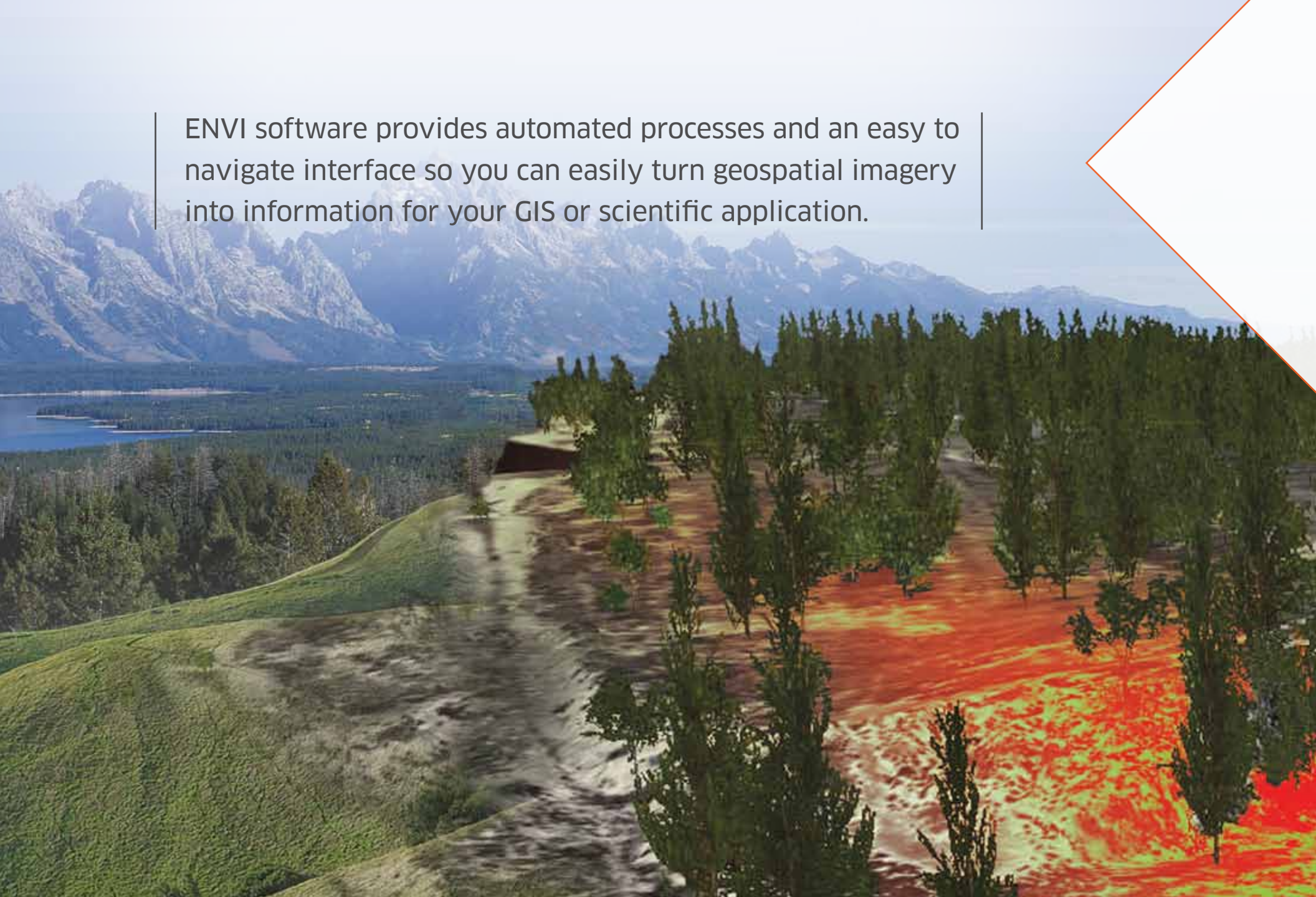
Visual Information Solutions

Exelis Visual Information Solutions provides advanced software tools to help professionals across industries and disciplines solve complex problems using geospatial imagery and data.

A composite image featuring a satellite in orbit above Earth. The satellite, with multiple solar panels, is in the upper right, emitting a blue beam of light onto the Earth's surface. The Earth shows a mix of land, water, and clouds. A semi-transparent blue rectangular area is overlaid on the Earth's surface, containing a smaller, semi-transparent orange rectangle. A white diagonal line runs from the top left towards the bottom left. In the bottom right, another satellite is visible, also emitting a beam of light.

We deliver the scientifically proven technologies you need to make accurate, informed decisions using remotely sensed imagery and data. Whether you need to determine the extent of damage from a natural disaster or ensure a safe military operation, our products provide you with critical geospatial awareness.

ENVI software provides automated processes and an easy to navigate interface so you can easily turn geospatial imagery into information for your GIS or scientific application.



TURN GEOSPATIAL IMAGERY INTO INFORMATION

Geospatial imagery is used across industries to provide up-to-date, accurate information about a geographic area of interest. With the right tools, imagery can be used to evaluate biodiversity, detect and identify targets, plan emergency response efforts, and increase your understanding of the world around you. To meet the growing need for geographic information, there are more imagery sensors operating today than ever before, and you need advanced software technology to effectively exploit the large datasets they provide.

ENVI software enables you to easily extract information from geospatial imagery, providing you with the knowledge you need to make informed decisions. Regardless of the data format you use, ENVI has the latest image processing and analysis tools you need to extract meaningful information. With an intuitive, customizable interface, ENVI is designed to be used by anyone from GIS professionals to image analysts and image scientists, regardless of prior processing and analysis experience. With robust built in functionality, and a variety of specialized modules for specific analysis needs, ENVI is the tool you need, regardless of your geospatial application.

And, ENVI makes its underlying development language, IDL, fully accessible to the user, so you can extend or customize ENVI features and functionality to suit your specific needs.



ENVI

IMAGERY BECOMES KNOWLEDGE

EXTRACT 3D INFORMATION FROM LIDAR DATA

When using geospatial data to make critical decisions, it is increasingly important to understand an area of interest from all angles. In addition to the information that can be extracted from traditional, two-dimensional imagery, professionals are now utilizing three-dimensional data, like LiDAR, to add meaningful context to their geospatial analysis workflow.

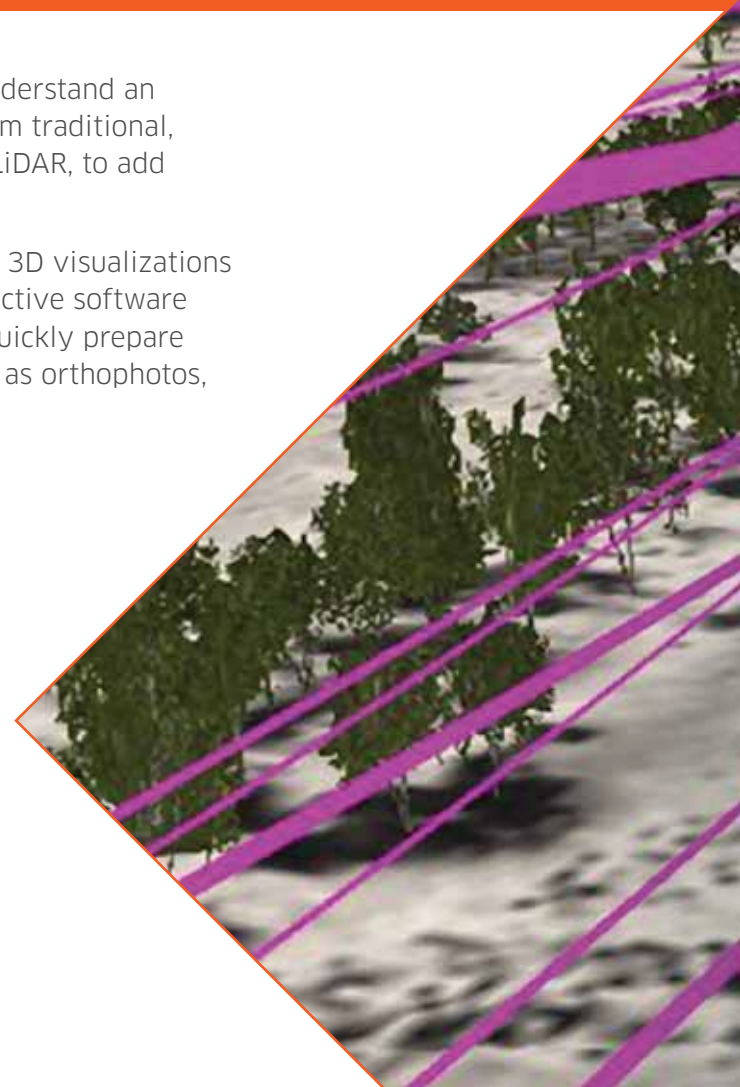
E3De is a geospatial software environment that allows you to create powerful, realistic 3D visualizations and automatically extract important features and products from LiDAR data. This interactive software program provides a simple workflow. So regardless of your experience level, you can quickly prepare your data, accurately extract features, fine-tune your results, and export your products as orthophotos, DEMs, DSMs, and shapefiles for further analysis.


Whether applying LiDAR data to applications in land use planning, utility and transportation corridors, natural resource management, geological exploration, or defense and intelligence missions, E3De allows you to understand the world around you in all three dimensions.



E3De

DISCOVER THE NEXT DIMENSION
OF YOUR DATA





E3De allows you to conveniently include 3D features from LiDAR data in your geospatial analysis projects, such as viewshed studies, forest inventories, right-of-way analyses, and urban planning applications.

DELIVER GEOSPATIAL INFORMATION TO THE PEOPLE WHO NEED IT MOST.



In today's world, imagery is information. As applications for geospatial imagery evolve, so does the need to efficiently manage and deliver imagery to those who need it most – those using it to make decisions. Whether it is access to existing base maps or to imagery that is only minutes old, defense and intelligence missions are often dependent on the situational awareness imagery provides.

Image Access Solutions (IAS) is a COTS image dissemination platform that allows users to deliver and visually exploit geospatial imagery data where and when the information is needed. By combining advanced image compression with delivery technologies, IAS is able to provide imagery intelligence products in seconds, not hours – even over constrained bandwidths, with no loss of resolution.

IAS utilizes trusted, standards-based technology and compression capabilities, ensuring that your tactical recipients are receiving accurate data. They can begin exploring images almost immediately over existing communications links on a variety of clients, including handheld devices, allowing them to quickly focus in on areas of interest for the most time sensitive operations. And, since IAS provides easy integration to existing enterprise architectures, it ensures a seamless workflow for your systems integrators.



IAS

GEOSPATIAL IMAGERY WHERE AND WHEN YOU NEED IT

CUSTOM SOLUTIONS TO YOUR COMPLEX PROBLEMS.

In today's fast-paced, technologically advanced world, you have more data available than ever to help you make decisions. Often you find off-the-shelf solutions to suit your project needs, but sometimes you need help from professionals with extensive industry knowledge to create unique solutions to complex problems.

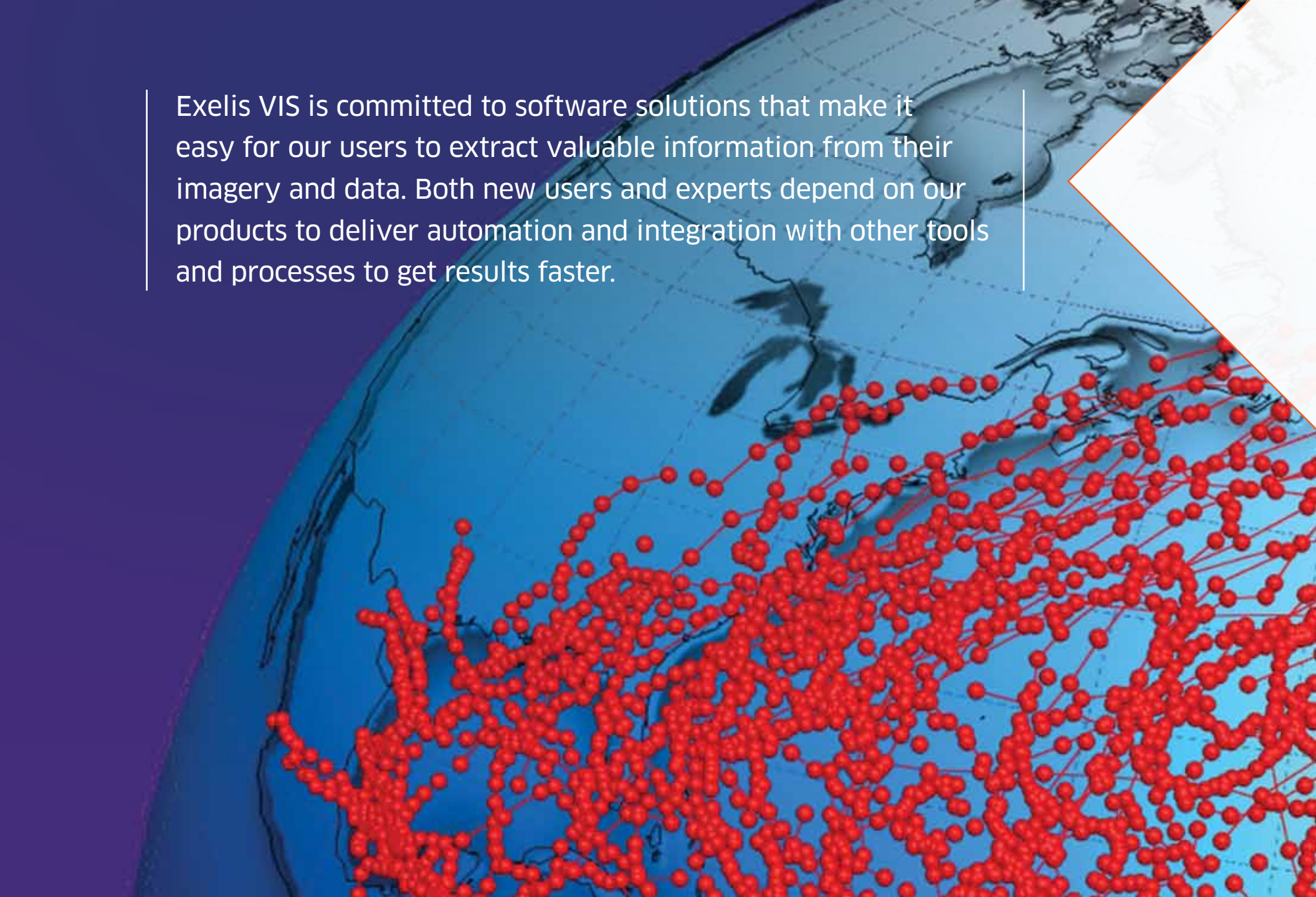
The Exelis VIS Professional Services Group (PSG) has revolutionized the way people analyze and visualize data and remotely sensed imagery, helping people across industries extract information from complex data and imagery to understand their problems, to make critical decisions, or to unlock age old mysteries. Whether it is through ENVI and IDL customization and extension, or by leveraging our licensed technology to deliver custom solutions to meet your geospatial and scientific challenges, our services group provides exceptional value to your commercial software investment.

Our team of experienced consultants have industry-leading expertise in a wide variety of disciplines and applications. Each PSG professional offers you hands-on experience to deliver custom solutions based on leading software technologies and their own scientific domain expertise. With cross-industry and cross-modality knowledge, they can assess, develop, and implement solutions to your unique complex data processing, exploitation and dissemination challenges.

- Expert software development, testing and commercialization
- Improved image and numerical data processing and analysis through customization
- Custom workflow development to maximize analytical efficiency
- Scientific algorithm development to help you make sense of your data
- On-site project execution and supervision to ensure a successful deployment
- Hardware and software integration, including interoperability with 3rd party software

GET THE ANSWERS YOU NEED
FROM A TEAM YOU CAN TRUST





Exelis VIS is committed to software solutions that make it easy for our users to extract valuable information from their imagery and data. Both new users and experts depend on our products to deliver automation and integration with other tools and processes to get results faster.

ANALYZE & VISUALIZE COMPLEX NUMERICAL DATA

A key foundation of discovery, from scientific research to managing natural resources, is analysis of numerical data. If making discoveries is a fundamental element of your work, then you need a tool to help understand your data and how to apply that knowledge effectively. Using a powerful, modern programming language lets you transform numbers into dynamic visual representations, so you can interpret your data and expedite discoveries.

IDL is the trusted scientific computing environment used across disciplines which require complex analysis of data. With IDL, you can create small scale analysis programs or a widely deployed application to transform numbers into intuitive graphic visualizations. The IDL graphics system gives you the flexibility to create the high quality, presentation style graphics you need to interpret results, move on to further analysis, or share information with colleagues. So whether you're using data to monitor climate change effects across the globe trying to determine characteristics of atmospheric conditions, or to model space physics, IDL is the flexible tool you need to create actionable information from data.

And, since IDL is not only a computing environment but also a powerful development language, ENVI software users depend on it for easy customization of their geospatial applications. IDL allows ENVI users to create batch processes for common tasks, customize menu items, add proprietary algorithms, or integrate other C++ and Java code with their geospatial analysis.



IDL

DISCOVER WHAT'S IN YOUR DATA

International Support

Exelis Visual Information Solutions is a global company with offices in North America, Europe, and Asia. Combined with our extensive, worldwide distributor network, we can support your geospatial needs regardless of your location.

Learning Opportunities

CLASSROOM TRAINING:

Whether you are just learning our products or an experienced pro, we have courses designed to take your abilities to the next level.

www.exelisvis.com/EventsTraining

ONLINE TRAINING:

Attend a live web seminar or watch a recorded web seminar - the perfect way to learn about the latest product developments from your desk.

Technical Support

All Exelis Visual Information Solutions products are backed by our world class technical support. Visit our support web page for information about how to receive help via the phone, email, or from our extensive online help articles.

www.exelisvis.com/Support

Community Connections

SOCIAL NETWORKS:

www.facebook.com/exelisvis
www.twitter.com/exelisvis
www.youtube.com/exelisvis

BLOGS:

www.imageryspeaks.com
www.idldatapoint.com

Contact Us

email: info@exelisvis.com
phone: 303.786.9900
web: www.exelisvis.com

EXELIS

Visual Information Solutions

ENVI and IDL are trademarks of Exelis, Inc. All other marks are the property of their respective owners. ©2012, all rights reserved. Exelis Visual Information Solutions, Inc. Image data courtesy of DigitalGlobe, GeoEye, and NASA.