

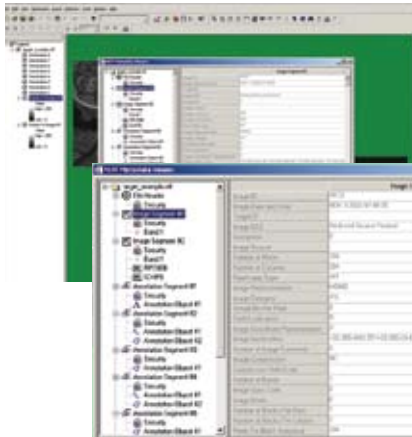


ITT

Visual Informations Solutions

ENVI NITF Module

When NITF is your standard, ENVI is your solution.



The National Imagery Transmission Format (NITF) allows the combination of images, graphics, and metadata in a single file to create an invaluable intelligence resource. It is the preferred standard for government and NATO data.

Access, View, and Process NITF Files

You can have full NITF support with ENVI, the software you already use for superior image access, viewing, processing, and analysis. The ENVI NITF Module is compliant with the Joint Interoperability Test Command (JITC) standards to C-Level 7 – the highest awarded – and includes virtually any feature you need to read, edit, and deliver NITF files including:



ENVI allows you to get the information you need from NITF data, with industry-leading reading, writing, and processing support, including a unique metadata viewer.

- Reading, writing, and displaying all components of the NITF standard (file, image, text, TRE & DES)
- File compression: NITF Preferred JPEG 2000 Encoding (NPJE) and Exploitation Preferred JPEG 2000 Encoding (EPJE) for reading, writing, and disseminating compressed data files
- Converting between NITF 2.0 and NITF 2.1 and NSIF 1.0 formats
- Reading and writing the government standard for data from commercial satellites, NCDRD (NITF Commercial Dataset Requirements Document), and Secondary Image Format (NSIF) files
- Extensive support for NSDE classified TREs and unclassified TREs, including user defined TREs
- Creating, editing, and deleting PIA TREs
- Automatic data georeferencing using DIGEST TREs, Rapid Positioning (RPC00A and RPC00B) TREs, and Replacement Sensor Model (RSM) TREs



Visit us at www.ittvis.com/ENVI.

Integrate Seamlessly with Your Workflow

Access, read, write, process, and share imagery in the NITF format. The module seamlessly integrates with your current imagery workflow and allows you to customize your read/write interface and behavior to your needs.

Find resources and information, or purchase an ENVI NITF Module at www.ittvis.com/ENVI, or call 303.786.9900.

Engineered for life